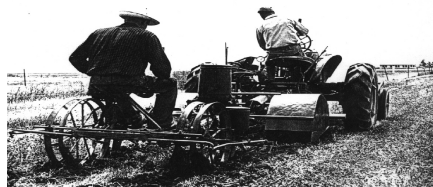




Field

Serving the Northern



Crops

Sacramento Valley

University of California • Cooperative Extension • Butte, Glenn & Tehama Counties

October 17, 2011

Vol. XVI, No. 1

Contents

Wheat and Barley Varieties for the 2012 Crop

Douglas J. Munier
Farm Advisor

The University of California in accordance with applicable Federal and State law and University policy, does not discriminate on the basis of race, color, national origin, religion, sex, disability, age, medical condition (cancer-related), ancestry, marital status, citizenship, sexual orientation, or status as a Vietnam-era veteran or special disabled veteran.



Inquiries regarding the University's nondiscrimination policies may be directed to the Affirmative Action Director, University of California, Agriculture and Natural Resources, 1111 Franklin, 6th Floor, Oakland, CA 94607-5200 (510) 987-0096.

To simplify information, trade names of products have been used. No endorsement of named products is intended, nor is criticism implied of similar products which are not mentioned.

Wheat & Barley Varieties for the 2012 Crop

When there were only a few isolated fields with stripe rust in the Sacramento Valley in 2009, it was the best wheat stripe rust news since the current stripe rust problems began in 2003. Unfortunately 2010 and 2011 both had more stripe rust problems. In 2010 the widely planted variety PR 1404 showed some susceptibility to strip rust and now in 2011 the variety Joaquin is now susceptible.

Brief summaries of the results of University of California Cooperative Extension wheat and barley variety testing are shown in Tables 1 and 2. There are several good varieties to choose from with good stripe rust resistance.

With wheat there is always a tradeoff between yield and quality. The variety situation has changed a little since 2009. Blanca Fuerte, a white bread wheat, still clearly has the highest yield with excellent stripe rust resistance, but has lower quality (protein) and is thus very difficult to market. Rockland is a new variety with about the same yield as Espresso, but with a one percent higher protein level. Cal Rojo and Redwing are two intermediate varieties in yield and quality. A newer UC variety, Patwin, has about the same yield as Cal Rojo, but higher protein.

As can be seen in Table 2, the barley variety UC 933 has consistently been a high yielding variety with good quality. Ishi is a similar newer variety.

Please contact me if you would like more detailed results sent to you, or go online at <http://smallgrains.ucdavis.edu>.

Table 2: Sacramento Valley barley variety summary.

Variety	2009-11 (3-Loc)	
	Yield (lb/acre)	Stripe Rust (1-8 rating)*
UC 603	5747	1.0
MAX	4363	5.1
UC 933	5750	1.0
MELTAN	4447	1.2
UC 969	5450	1.0
ISHI	6030	1.1
TAMALPAIS	5370	1.3

*Rating scale for disease (area of flag-1 leaf affected):
1 = 0-3%, 2 = 4-14%, 3 = 15-29%, 4 = 30-49%,
5 = 50-69%, 6 = 70-84%, 7 = 85-95%, 8 = 96-100%.

P. O. Box 697 • Orland, CA 95963 • (530) 865-1107 • FAX: (530)865-1109

Cooperative Extension Work in Agriculture and Home Economics, U.S. Department of Agriculture, University of California and County of Glenn Cooperating

Table 1: Sacramento Valley wheat and triticale variety summary.

Variety	Yield (lbs./acre)		Protein (%)	Stripe Rust*
	2010-11 (6 Loc/Yr)	2009-11 (9 Loc/Yr)	2010 (6 Loc)	2011 (6 Loc)
ANZA	3820 (11)	4050 (10)	11.3	4.3
EXPRESS	4870 (10)	4850 (9)	12.7	3.0
PATWIN	6300 (5)	6160 (4)	13.4	1.1
JOAQUIN	4780 (11)	5060 (8)	12.7	6.8
CAL ROJO	6560 (3)	6220 (3)	11.9	1.0
EXPRESSO	5810 (9)	5610 (7)	13.2	1.0
RED WING	6720 (2)	6550 (2)	11.8	1.5
BLANCA FUERTE	6970 (1)	6770 (1)	11.2	1.2
WB-CRISTALLO	6280 (6)	6130 (5)	12.4	1.3
WB-PALOMA	5890 (8)	5710 (6)	13.4	4.3
WB-ROCKLAND	5990 (7)	-	14.3	1.0
TRICAL BRAND 105	6380 (2)	6320 (2)		
TRICAL BRAND 118	7510 (1)	7380 (1)		
LSD (.05)	340	280		

Numbers in parentheses indicate relative rank.

*Rating scale for disease (area of flag-1 leaf affected): 1 = 0-3%, 2 = 4-14%, 3 = 15-29%, 4 = 30-49%, 5 = 50-69%, 6 = 70-84%, 7 = 85-95%, 8 = 96-100%.