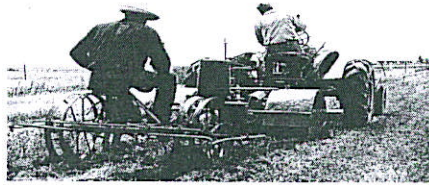




# Field

Serving the Northern



# Crops

Sacramento Valley

University of California • Cooperative Extension • Butte, Glenn & Tehama Counties

October 7, 2010  
Vol. XV, No. 2

### Contents

### **Wheat and Barley Varieties for the 2011 Crop**

## **Wheat & Barley Varieties for the 2011 Crop**

**Doug Munier, Jerry Schmierer, & Jorge Dubcovsky**

Douglas J. Munier  
Farm Advisor

*The University of California in accordance with applicable Federal and State law and University policy, does not discriminate on the basis of race, color, national origin, religion, sex, disability, age, medical condition (cancer-related), ancestry, marital status, citizenship, sexual orientation, or status as a Vietnam-era veteran or special disabled veteran.*



*Inquiries regarding the University's nondiscrimination policies may be directed to the Affirmative Action Director, University of California, Agriculture and Natural Resources, 1111 Franklin, 6<sup>th</sup> Floor, Oakland, CA 94607-5200 (510) 987-0096.*

*To simplify information, trade names of products have been used. No endorsement of named products is intended, nor is criticism implied of similar products which are not mentioned.*

When there were only a few isolated wheat fields with stripe rust in the Sacramento Valley in 2009, it was the best strip rust news since the current stripe rust problems began in 2003. The news in 2010 isn't quite as good. A newer primarily forage variety, PR 1404, with previous resistance to stripe rust is now only moderately resistant. Stripe rust strains are continuing to develop and spread through California.

Prior to 2003, wheat stripe rust was last prevalent in the Sacramento Valley in the 1960's. Anza wheat was developed as a new variety with resistance to the stripe rust strains of the 1960's, but now like many others is susceptible to the current strains.

Brief summaries of the results of University of California Cooperative Extension wheat and barley variety testing are shown in Tables 1 and 2. There are several good varieties to choose from with good stripe rust resistance.

With wheat there is always a tradeoff between yield and quality. The variety situation hasn't changed much since 2009, Blanca Fuerte, a white bread wheat, clearly has the highest yield with excellent stripe rust resistance, but has lower quality (protein). Espresso, a red bread wheat, has the highest quality, but much lower yield. Cal Rojo and Redwing are two intermediate varieties in yield and quality.

As can be seen in Table 2, the barley variety UC 933 has consistently been a high yielding variety with good quality. Ishi is a similar newer variety.

Please contact me if you would more detailed results sent to you or go online at <http://agric.ucdavis.edu/crops/cereals/cereal.htm> for the complete statewide results.

**P. O. Box 697 • Orland, CA 95963 • (530) 865-1107 • FAX: (530)865-1109**

Cooperative Extension Work in Agriculture and Home Economics, U.S. Department of Agriculture, University of California and County of Glenn Cooperating

Table 1: Sacramento Valley Wheat and Triticale Summary.

Variety	Sacramento Valley		
	Yield	Stripe Rust	Protein
	(lbs/A)	(1-8)*	(%)
	2008-10	2010	2009
	(9 Loc)	(6 Loc)	(6 Loc)
ANZA	4568	4.8	11.5
EXPRESS	4460	4.1	13.4
BLANCA GRANDE	5609	1.9	13.0
PATWIN**	6600		12.9
JOAQUIN	6324	2.3	13.5
CAL ROJO	6744	1.0	12.8
LASSIK**	6416		12.6
EXPRESSO	5577	1.0	14.0
REDWING	6940	1.0	12.4
BLANCA ROYALE	6451	1.0	12.6
BLANCA FUERTE	7232	1.0	11.4
CHRISTALLO	6383	1.0	12.8
LARIAT	5766	1.0	12.7
PALOMA	5694	1.0	13.0
TRICAL BRAND 105	6814	2.0	
TRICAL BRAND 118	7681	3.1	

\* Rating scale for diseases (area of flag-1 leaf affected):

1 = 0-3%, 2 = 4-14%, 3 = 15-29%, 4 = 30-49%, 5 = 50-69%, 6 = 70-84%, 7 = 85-95%, 8 = 96-100%.

\*\* one missing location in 2010

Table 2: Sacramento Valley Barley Summary.

Variety	Sacramento Valley	
	Yield	Stripe Rust
	(lbs/A)	(1-8)*
	2008-10	2010
	(4 Loc)	(6 Loc)
UC 603	5573	1.0
MAX	4698	3.9
UC 933	6520	1.0
MELTAN	4533	1.1
UC 969	4528	1.0
ISHI	6545	1.1
TAMALPAIS	6173	1.4

Nonprofit Organization  
U. S. Postage  
PAID  
Orland, CA 95963  
Permit No. 63

University of California  
Cooperative Extension  
Glenn County  
P. O. Box 697  
Orland, CA 95963